

JOIN US SATURDAY 04.02.2011

FOR "A MOMENT FOR LIFE"

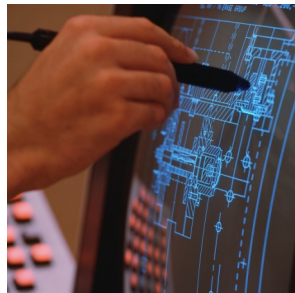
MUST BE
14-21
YEARS OLD

WHERE:
VIRGINIA STATE
UNIVERSITY

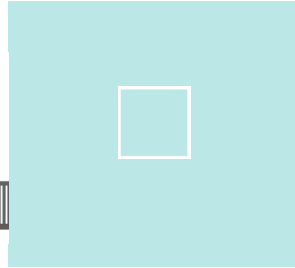


SPECIAL GIFTS

TIME:
8:30A.M-3:30P.M.



8TH ANNUAL
CENTRAL VA
YOUTH LEADERSHIP
SUMMIT



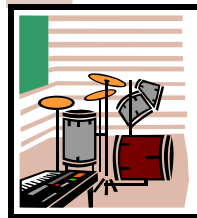
TEEN and
YOUNG ADULT
WORKSHOPS



SOCIAL
NETWORKING



TALENT
SHOW



PARENTS and
SUPPORTIVE
ADULTS ARE
WELCOME

FREE FOOD



SPONSORS

- *Crater Regional Workforce Investment Group
- *Resource Workforce Investment Area
- *South Central Workforce Investment Area
- *Petersburg Office on Youth
- *Surry County Office on Youth
- *VA Department of Rehabilitative Services
- *VA Department of Social Services Division of Family Services
- *John Tyler Community College
- *Hanover Community Services
- *VA Job Corps

For More Information Contact:
 Crater Regional Workforce Investment Group
 Email: admin@learntoearn.org
 Mailing Address: 114 N. Union St., Petersburg, VA 23803
 Fax: 804.732.6668
 Phone: 804.732.7053

Registration Deadline: 03.25.2011

SELECT your top 3 workshops by putting 1,2,3 in the boxes with the # below.

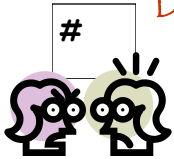
WORKSHOP DESCRIPTIONS

REGISTRATION
DEADLINE: 03.25.2011



LEAD NOW & FOLLOW LATER

This session will help youth to learn ways to get involved in their communities through civic engagement. Learn that your voice Really does count. Participants will learn to gain "practical benefits" from paid/unpaid work experiences and discover unique ways to effectively communicate new skills when organizing resumes, during interviews, etc.



DON'T TOUCH ME

Violence at home or in the community affects the work place. Tips will be provided to help individuals to learn how to be law abiding citizens and ways to avoid domestic violence. Whatz up with the bullying and the Facebook gangsters? Learn how you can avoid them. Who's looking at you on-line and how are they using your information?



I DON'T HAVE TIME FOR THIS!

Do you need help with managing your time? Trying to balance your social life, family, academics, extra curriculum activities, and community involvement because your management is not working for you? This session will also teach study skill techniques and goal setting. Learn how to match your interests with a career.



Summit
Date:
04.02.2011



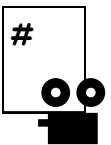
WE FALL DOWN BUT WE GET UP!

Does it seem like nothing is going right for you? It seems like you are running into a brick wall? Learn how to be resilient (able to bounce back) from having many life issues and challenges.



***18 TO 21, I AM GROWN...NOW WHAT?

You're 18, now what? Got a high school diploma or GED, what do you do with it in today's labor market? Did you dropout of school? What kind of training do you need? Learn about the resources available for you in your community to help you become self-sufficient. Things like apprenticeship, job training, labor market information, supportive services, etc.



FIRST IMPRESSIONS?

How do you make a good impression during job search? When people see you, what do they think? What are some essential clothes for job search? Learn how to mix and match clothes to make different outfits. Remember, put on the Right Garments...Work Ethics!



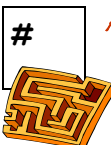
FINANCIAL AID FOR COLLEGE/VOCATIONAL SCHOOL

You've finally decided that you want to attend college or a vocational school but where will you get the money? Learn how and where to look for financial aid, scholarships, etc.



THE REALITY STORE

How much is it going to cost for you to live on your own? Do you have a budget? How much is rent, car note, food, entertainment, emergencies, etc. Learn how to budget as you move toward independence.



ADULT SESSION: EXTREME MAKE OVER (must be 22 years old or over)

Workshops for parents and adults who support teens and young adults. Topics: Social Networking, the Magic book, Stress Management, Workforce Investment Act services, etc. Also, learn ways to be supportive of your young person.

| | | |
|-------------------------|------------|----------------|
| Last Name | First Name | Initial Middle |
| Address | | City/County |
| Phone: Area Code/Number | | Email Address |
| Zip Code | | |

TO REGISTER:

Complete this form and send it to
Crater Regional Workforce Investment Group
by 03.25.2011.